

The Point Samson WHAT YOU GET

Quality & Assurance

- Part of BGC, Australia's largest home builder
- Fixed Price Building Contract
- Structural Engineer Certified
- 6 month defect liability period
- Full Indemnity Insurance
- Lifetime Structural Guarantee
- Hard Wired smoke detectors
- Approved Electrical Safety Switch

Interior Standard Specifications

- Separate Home Theatre room
- Generous Alfresco area
- Ample lighting and power points throughout
- Convenient single power point located in meter box
- Gas bayonet with adjacent power point
- Central island bench in Kitchen
- Shelf over fridge recess
- Technika stainless steel 600mm electric fan forced oven
- Technika stainless steel 600mm gas hot plate with wok burner
- Technika stainless steel & glass 900mm canopy rangehood
- Stainless steel 1 and ¾ bowl Kitchen sink with designer sink mixer tap
- Large double door laminated pantry
- Selection of "Polyform" Kitchen benchtops
- Designer handles to Kitchen and vanity cupboards
- Quality Polyrey ABS edging on Kitchen and Bathroom cupboard doors

- Handy benchtop to Shopper entry
- Vanity length framed mirrors to vanities
- Polyrey "Polyform" vanity tops to Bathroom and Ensuite
- Privacy latch to Bathroom & Toilet
- Water efficient dual-flush cistern
- Designer toilet roll and double towel rail to Bathroom, Ensuite and WC
- Designer Bathroom & Ensuite taps
- Exhaust fan to Ensuite WC
- Soap holders to shower recesses
- Automatic washing machine taps
- 45 litre stainless steel trough and metal cabinet to Laundry
- Linen cupboard with lined shelves & sliding doors
- Huge walk in robe in main suite with built in shelf unit
- Shelf and chrome rail to robes in Bedrooms 1,2, 3 and 4
- Full paint finish to ceilings, doors and door frames
- Dead locks to entry and shopper doors
- Protective metal corner beading strips to trafficable internal corners

Exterior Standard Specifications

- Stylish Colonial elevation with external render, sloping sills & projecting brick band to front, semi wrap around Verandah, and awning windows
- Feature Colonial style entrance doors
- Solid double brick construction
- Solar efficient eaves to total living area (excluding feature recess)

- Concave joints and cream mortar
- Full paint finish to eaves, fascia, down pipes and meter box
- Double lockup garage with grano hardstand Automatic cedar look garage door with remote controls
- Affinity Ultralock coloured aluminium windows and sliding doors
- Flyscreens to all sliding doors and windows
- 4 External lights
- Quality 25 degree pitch with Harmony Habitat range roof tiles or Zinalume metal roof cover
- Blockpaved driveway, path, Verandah and Alfresco
- Front & rear external garden taps

Additional Standard Specifications

- R3.0 Celltherm insulation to all living areas and garage
- Environmentally friendly Solar Gas Boosted Split Hot Water system
- Professional guidance from a HIA-qualified pre-start consultant
- Building license and Water Corporation fees
- Costs of plans and specification
- Contour survey and site inspection*
- Site repeg if required*
- Complete termite treatment
- Engineer-designed concrete slab
- Sewer connection 10m past last junction point



* Applies to new sub-divisions only. Built up areas may incur additional charges. Specifications are subject to change without notice.

How the West Australian Housing Centre are bringing people and houses together

HOME. Choose from our extensive range of quality first home designs and elevations. You can even make design changes to suit your lifestyle.

LAND. Selection of blocks in many popular suburbs throughout the metropolitan area to choose from. There are even landscaping and fencing bonuses available in many areas to make your home more valuable.

FINANCE. Use our finance negotiation power to get fast, hassle free loans from most major lenders. Repayments can be similar to your rent, and there are government support and no-deposit loans available. For more information on finance, call 9214 1111.

HELP. We're able to provide you with expert advice that will help you understand the issues involved in owning your first home and select the options that suit you best.

For further information

3 Ord Street, West Perth, WA 6005. Telephone 9214 1111.



HIA Best Display Home Winner 2006 and 2009





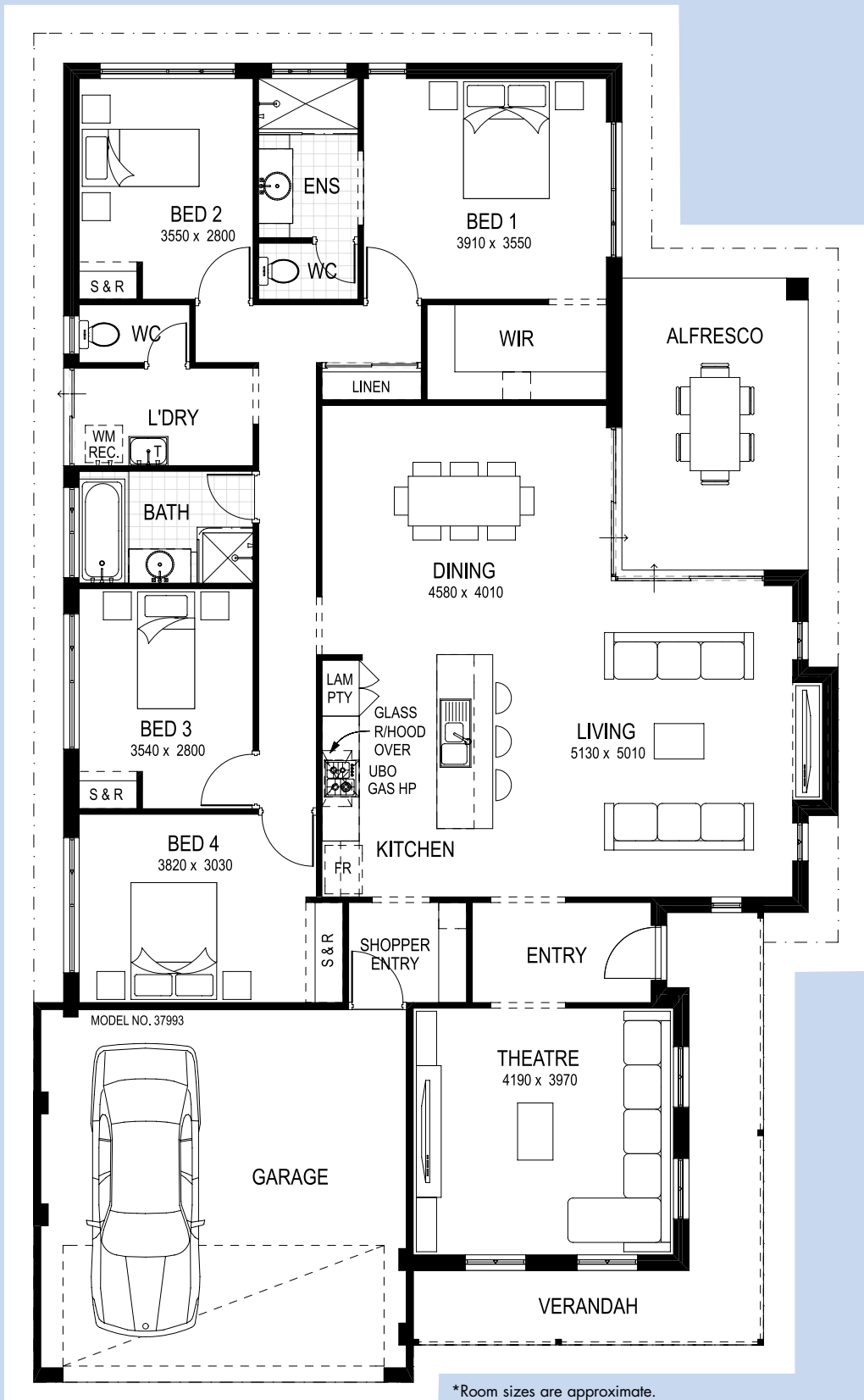
The Point Samson

ON DISPLAY AT WARRINGTON ROAD, BYFORD

**Bringing people
and houses together**



wahousingcentre.com.au



*Room sizes are approximate.



THE POINT SAMSON Aptly named after a location best known for rest and relaxation, the Point Samson offers a laid back approach to living.

A distinctly classical federation design, this home is the epitome of Australian lifestyle. Wide verandahs surround the home, and the floorplan is perfect for the social Aussie way of life. The entertaining area encompasses both indoor and outdoor space, and guests can blend together through large glass doors which not only seem to bring the outside in, but naturally cool and heat the inside.

The main living area encompasses dining, kitchen and lounge areas and can be shut off from the rest of the home. Four generously sized bedrooms, two bathrooms and a spacious laundry are all located at the side and rear of the home, minimizing interruptions from traffic and keeping the rest areas quiet and peaceful.

With a separate shopper entry off the garage, the main entry to the side of the home gives the façade an uncluttered, clean line.

Come and soak up the sensational Point Samson.

