

The Coral Bay. WHAT YOU GET

- Feature elevation as displayed
- Double garage with remote sectional door and 2 remote handsets
- Blok-pave to driveway, verandah and Alfresco from builders standard range
- European styled Bellissimo stainless steel gas hot plate with wok burner and stainless steel electric oven
- 300 litre gas boosted solar hot water system
- Gas bayonet point
- Vanity cupboards and mirrors to bathroom and ensuite
- Built in 2 door laminated pantry
- Harmony Manor shingle tiles to roof from builders standard range
- Celltherm ceiling insulation (R3)
- Solid double brick construction
- Raked or rolled joints, cream mortar
- Quality plasterboard ceilings and cornices
- Full paint finish excluding internal walls
- Affinity ultralock coloured aluminium windows and sliding doors
- WIR to master bedroom
- Robe recess with shelf and rail to minor bedrooms
- 1½ bowl sink with flick mixer tap
- Fully lined kitchen cupboards (melamine)
- 900mm Curved glass canopy range hood to kitchen
- Polyform square edged bench tops to kitchen bathroom and ensuite as displayed
- Choice of imported floor tiles to bathroom and ensuite – standard 200 x 200
- Skirting tiles to bathroom, W.C., laundry and kitchen
- Soap dishes to showers
- Double towel rails to bathroom and ensuite
- Coloured bath and hand basins
- Laundry trough with cabinet and sudsaver
- Coloured cistern and seat to W.C.
- Dual flush toilet cisterns
- Automatic washing machine taps
- Choice of chrome or acrylic taps
- Front and rear garden taps
- Privacy latch to bathroom and W.C.
- Flyscreens and flydoors to all sliding doors and sliding windows
- Ample light and power points
- External light to front and all entry points and carport
- Exhaust fans to kitchen and ensuite
- Gainsborough/Ambassador Lever door handles throughout
- Local authority and water board standard building fees
- Cost of plans and specifications
- Fixed Price Contract
- Engineer designed concrete slab
- Architectural design service
- Alterations and additions to plan to suit your requirements
- The cost of contour survey and site inspection in new subdivisions
- Termite treatment to slab area
- Electrical safety switch
- Connection to sewer up to 10 metres included
- 2 hardwired smoke detectors
- 25° roof pitch
- Lifetime structural guarantee for the duration of the time you remain the owner of the home



The Coral Bay.

ON DISPLAY AT NARLA PLACE, QUEENS PARK

Bringing people and houses together

HOME. Choose from our extensive range of quality home designs and elevations. You can even make design changes to suit your lifestyle.

LAND. Selection of blocks in many popular suburbs throughout the metropolitan area to choose from. There are even landscaping and fencing bonuses available in many areas to make your home more valuable.

FINANCE. Use our finance negotiation power to get fast, hassle free loans from most major lenders. Repayments can be similar to your rent, and there are government support and no-deposit loans available. For more information on finance, call 9214 1111.

HELP. We're able to provide you with expert advice that will help you understand the issues involved in owning your first home and select the options that suit you best.

For further information

3 Ord Street, West Perth, WA 6005. Telephone 9214 1111.

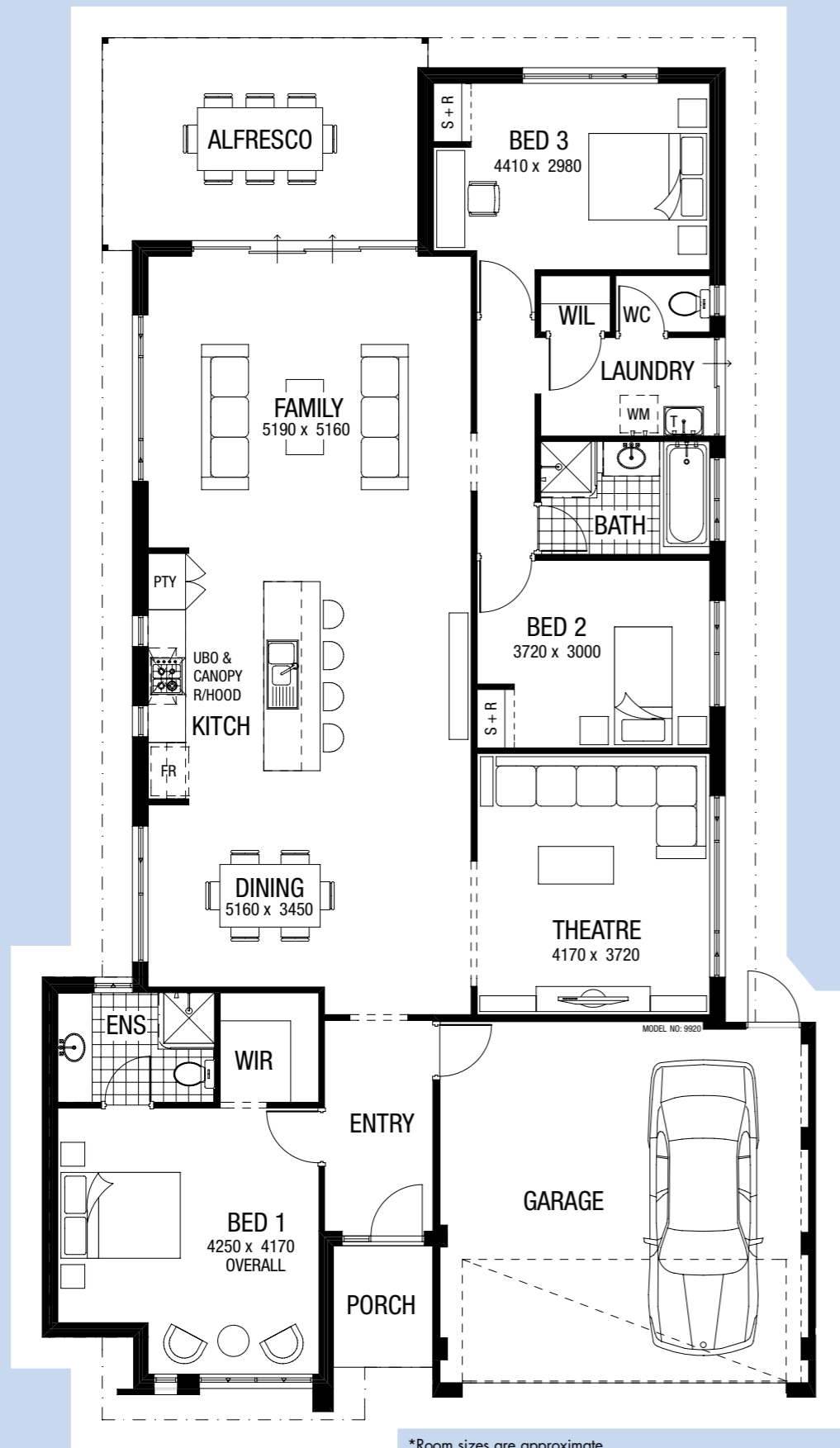


Bringing people and houses together



wahousingcentre.com.au





*Room sizes are approximate.



THE CORAL BAY. The Coral Bay's sleek contemporary lines and stylish colours deliver a narrow lot home with bold street appeal. Inside you'll find all the features essential for modern, comfortable living. The spacious master suite and the double sized children bedrooms provide relaxed private spaces for all the family. And at the heart of the home a gourmet kitchen presides over the dining and family areas which flow effortlessly out to the alfresco area where entertaining is a breeze. Kicking back is easy in the home theatre room which can double up as an oasis, a place to unwind after dinner with family and friends. The Coral Bay is a narrow lot home which maximises light, space and comfort, offering flexible living options which can accommodate your family's changing needs.

