

# The Bremer WHAT YOU GET

- Feature elevation as displayed
- Gas boosted solar hot water system
- Double garage with remote control sectional door
- Blok-pave to driveway, verandah and Alfresco from builders standard range
- Electric stainless steel fan forced oven and gas hotplate including wok burner
- Vanity cupboards and mirrors to bathroom and ensuite
- Colorbond or Harmony tiled roof from builders standard range
- Celltherm insulation R 3
- Solid double clay brick construction
- Raked or rolled joints, cream mortar
- Quality plasterboard ceilings and cornices
- Full paint finish excluding internal walls
- Affinity ultralock coloured aluminium windows and sliding doors
- His and Hers WIR to master bedroom
- 1 ½ bowl sink with flick mixer tap
- Built in two door laminated pantry
- Fully lined kitchen cupboards (melamine)
- Feature front door
- Choice of imported floor tiles to bathroom and ensuite – standard 200 x 200
- Skirting tiles to bathroom, W.C., laundry and kitchen
- Soap dishes to showers
- Towel rail and toilet roll holders
- Coloured bath and hand basins
- Stainless steel laundry trough with cabinet and sudsaver
- Coloured cistern and seat to W.C.
- Dual flush toilet cisterns
- Automatic washing machine taps
- Choice of coloured acrylic taps
- Front and rear garden taps
- Privacy latch to bathroom and W.C.
- Exhaust fans to kitchen and ensuite
- External light to front and all entry points and carport
- Ample light and power points
- Flyscreens and flydoors to all sliding doors and sliding windows
- Local authority and water board standard building fees
- Cost of plans and specifications
- Fixed Price Contract
- Engineer designed concrete slab
- Architectural design service
- Alterations and additions to plan to suit your requirements
- The cost of contour survey and site inspection in new subdivisions
- Termite treatment to slab area
- Electrical safety switch
- Connection to sewer up to 10 metres included
- 2 hardwired smoke detectors
- 25° roof pitch
- Lifetime structural guarantee for the duration of the time you remain the owner of the home



## The Bremer.

ON DISPLAY AT JASPER WAY, LAKELANDS

### Get it all together with the West Australian Housing Centre

**HOME.** Choose from our extensive range of quality first home designs and elevations. You can even make design changes to suit your lifestyle.

**LAND.** Selection of blocks in many popular suburbs throughout the metropolitan area to choose from. There are even landscaping and fencing bonuses available in many areas to make your home more valuable.

**FINANCE.** Use our finance negotiation power to get fast, hassle free loans from most major lenders. Repayments can be similar to your rent, and there are government support and no-deposit loans available. For more information on finance, call 9214 1717.

**HELP.** We're able to provide you with expert advice that will help you understand the issues involved in owning your first home and select the options that suit you best.

For further information

3 Ord Street, West Perth, WA 6005. Telephone 9214 1111.



HIA Award  
Winner 2005

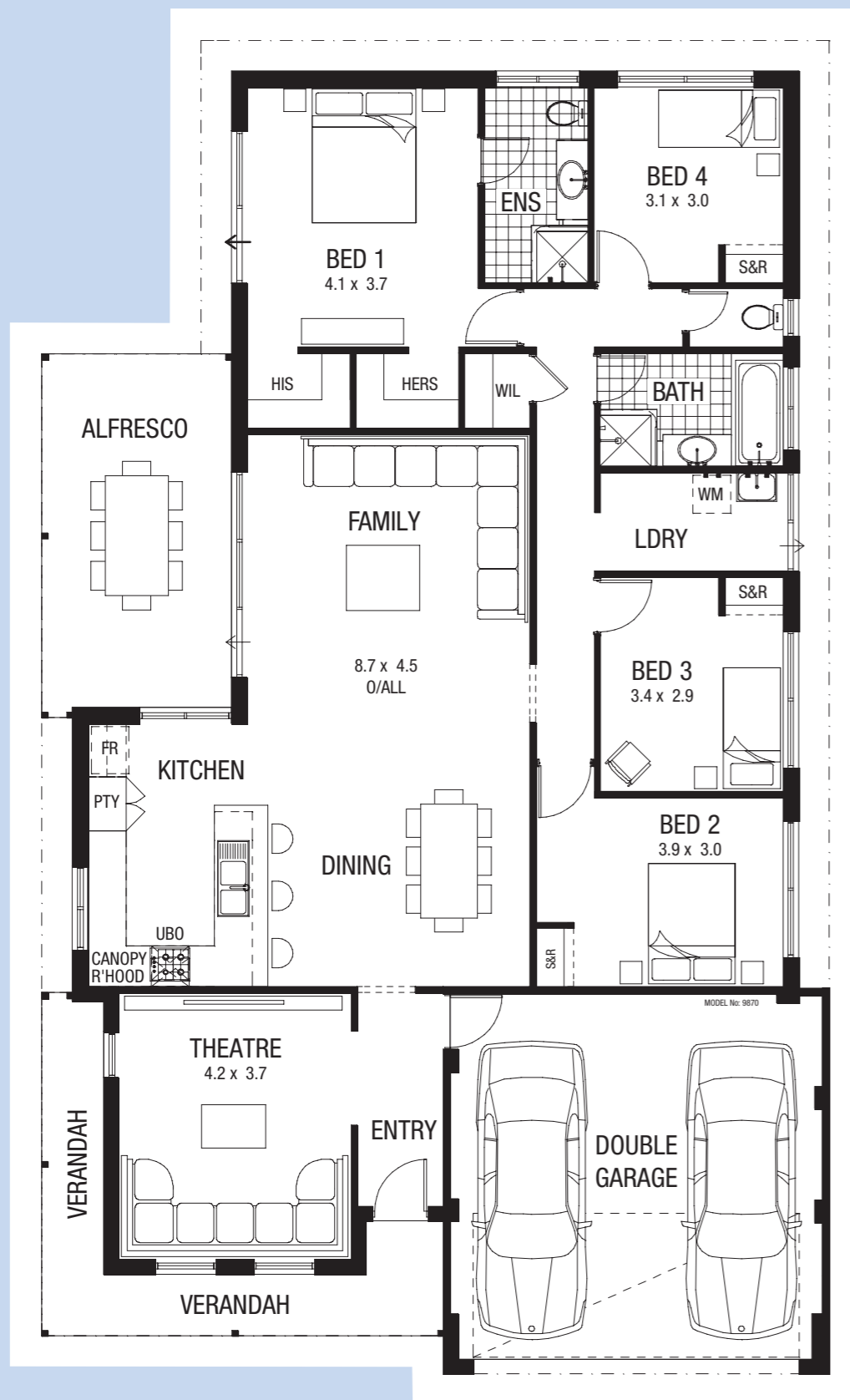


Get it all  
together



wahousingcentre.com.au





**THE BREMER.** A classic on the outside with a spacious, modern layout inside. The front façade features a wrap around verandah giving The Bremer the look of a classic family home. The master bedroom and ensuite are cleverly positioned at the rear of the house. His and her walk in wardrobes and sliding door access to an outdoor entertaining area complete the parents retreat. Generous living areas incorporate a large open-plan kitchen complete with stainless steel appliances, whilst the family and dining areas connect to the alfresco dining area. A theatre room adds to the entertaining possibilities.

